

SAMPLE–SHORT PAPER 1 FINAL DRAFT

Visual Analysis of Lee Price's *Asleep*

INTRODUCTION

Lee Price's painting *Asleep* created in 2008, is a large-scale oil painting of a woman and many cupcakes in the personal and intimate setting of a bed. The painting may demonstrate the relationship that the female figure has with food. This relationship is not necessarily a positive one; a sense of guilt and secrecy in a woman's relationship with food, particularly in terms of overeating, is emphasized in *Asleep* through pattern, a restricted color palette, and a birds-eye perspective.

DESCRIPTIVE PARAGRAPH

Price's *Asleep* is a realistic oil painting on linen; Price's realistic style makes the painting look almost photographic. In the center of the asymmetrical composition is a nude female figure laying on her left side in the fetal position. The figure is presumably sleeping, as the title suggests. She is on white sheets and pillows, surrounded by a great number of cupcakes. Some cupcakes are uneaten, some half-eaten, and some only a wrapper remains. The icing on the cupcakes are tints of yellow, tints of blue, and tints of red. Other colors throughout the composition, like that of the figure's skin and hair, are neutral tones. Icing is smeared on the female figure's calves, arms, and hands.

PERSUASIVE PARAGRAPH

topic sentence → A pattern is created through the repetition of the many cupcakes laid out around the figure in Price's *Asleep*. The pattern created is irregular and sporadic; the seemingly random placement of the cupcakes adds to the asymmetrical balance in the composition. The asymmetry and irregularity of the pattern, paired with the abundance of cupcakes and wrappers throughout the composition, gives the painting a cluttered and disorderly sense.

evidence →

analysis →

concluding sentence → The disorder created through the pattern emphasizes the negative feelings, like those of guilt, created through overeating.

SAMPLE–SHORT PAPER FINAL DRAFT: CONTINUED

PERSUASIVE PARAGRAPH

topic sentence → Feelings of guilt, as well as secrecy, in the relationship between the female figure and food are also conveyed in the painting through the restricted color palette. The colors are largely neutral, shown in the figure's skin and hair, as well as in the cupcake wrappers and the white of the bed sheets and pillows. The only area that does not contain neutral colors is in the icing on the cupcakes, and even then, it is strictly light tints of primary hues. Because of the use of neutrals and very light tints, a sense of secrecy and reservation is conveyed in the scene. By using these unsaturated and neutral colors in the painting, as opposed to vibrant, saturated colors, it is implied that the relationship between the female figure and food is shrouded in shame and secrecy, particularly in terms of binge eating.

evidence

analysis

concluding sentence →

PERSUASIVE PARAGRAPH

topic sentence → Along with the disorderly pattern and restricted color palette, Price's choice to depict the scene from a bird-eye perspective also shows the guilt and negative feelings of the female figure in the painting. Looking down onto the figure is a very intimate and intrusive point of view. The intrusive nature of the birds-eye perspective gives off a feeling of judgment against her; by looking down on the female figure in judgment, it is as though she and her intimate, personal business are on display to be gawked at and critiqued. This judgmental display furthers the sense of guilt and shame given off by the painting and the female figure's relationship with overeating that is so prevalent within the painting.

evidence

analysis

concluding sentence →

CONCLUSION

Asleep demonstrates how Price used her skillful hand and thoughtfully chose visual elements to create a powerful and realistic scene of a negative relationship between a woman and food. She uses a disorganized pattern, restricted color palette of neutrals and light tints, and an intimate birds-eye perspective to convey an overwhelming mood of secrecy, guilt, and shame in the female figure in terms of her binge-eating. The scene, as well as the mood and feelings that the visual elements invoke, reflect a very serious and prevalent issue that many people face.

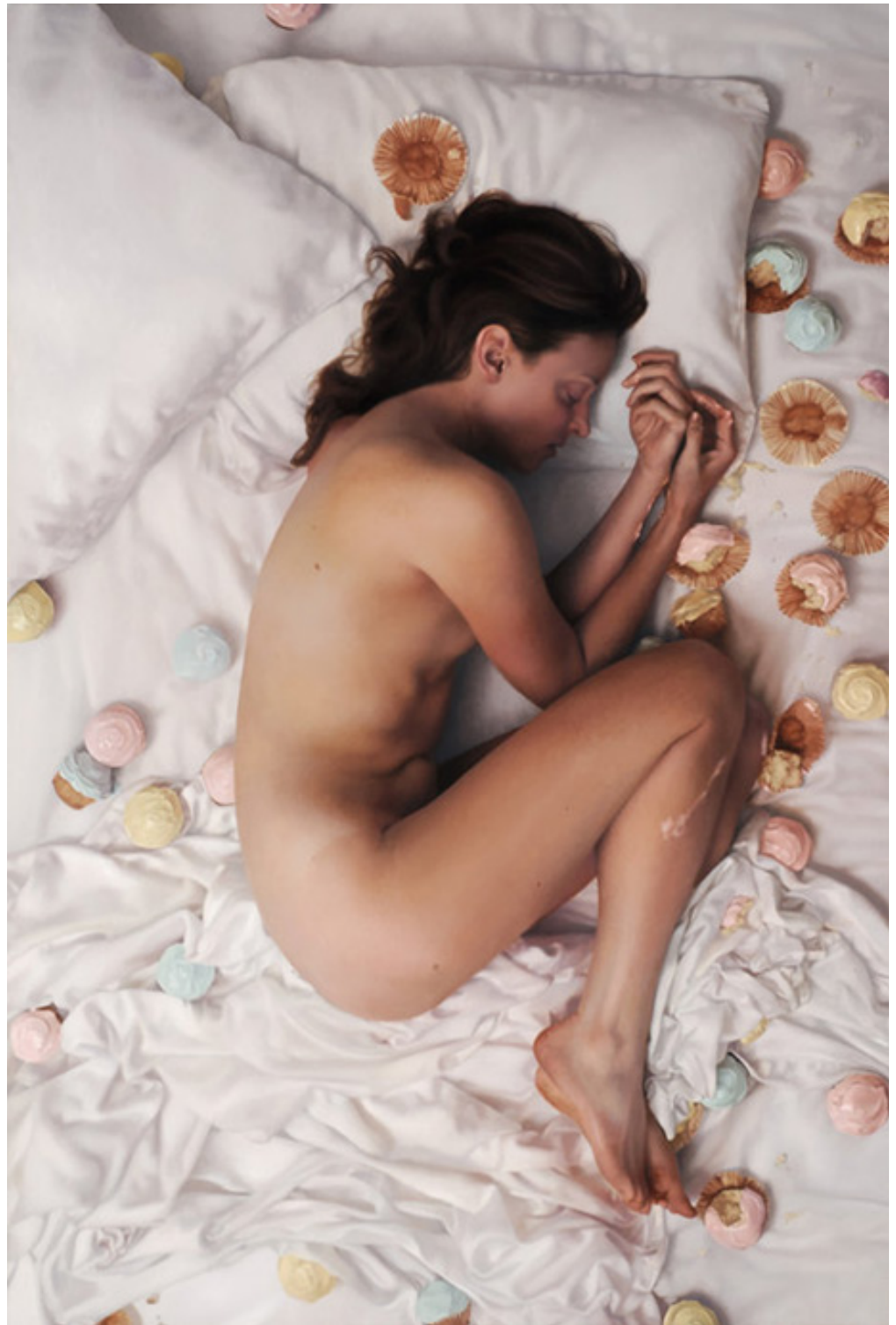


Figure 1. Lee Price, *Asleep*, 2008. Oil on linen, 56" x 38" (142.2 cm x 96.5 cm). Private collection.